

To Nurture People Who Cherish Their Region and Support Its Reconstruction and Development

Iwate Reconstruction Education Program



Third Edition
Issued in March 2019
Iwate Prefectural Board of Education

To Nurture People
Who Cherish Their Region and
Support Its Reconstruction and Development

Iwate Reconstruction Education Program

Live
Involve
Prepare

Third Edition
Issued in March 2019
Iwate Prefectural Board of Education

CONTENTS

Iwate Reconstruction Education	01
What Is Iwate Reconstruction Education?	02
Significance of the Iwate Reconstruction Education Program	03
Outcomes of the Iwate Reconstruction Education Program	04•05
Points for Promoting the Iwate Reconstruction Education Program	06
Educational Values of the Iwate Reconstruction Education Program	07
List of Educational Values and 21 Example Aims of the Program	08•09
How to Incorporate the Iwate Reconstruction Education Program into	
School Management and How to Develop a Curriculum	10•11
Important Points of the Iwate Reconstruction Education Program	12
Teaching Plan of the Iwate Reconstruction Education Program	13
The Importance of Connecting with Communities	14
Testimonials of the Iwate Reconstruction Education Program	15
Possibilities of the Iwate Reconstruction Education Program	16

Revision Notes

The Iwate Reconstruction Education Program (revised version) has been amended to align the content and unify the notation system.

The main revisions are as follows:

- Aligned the **objectives and educational values** of the Iwate Reconstruction Education Program.
- Revised the **list of educational values** of the Iwate Reconstruction Education Program.
- Summarized the **outcomes** of the Iwate Reconstruction Education Program.
- Presented the **possibilities** of the Iwate Reconstruction Education Program.

Purpose of the Booklet

The Iwate Reconstruction Education Program requires each school to develop and implement **its unique approach** while taking into account its actual situation.

This booklet serves **as a guideline** for each school **to promote the Iwate Reconstruction Education Program**. It should also be **used as a resource for sharing the program philosophy** with schools, families, communities, and related institutions and organizations.

Iwate Reconstruction Education

Friday, March 11, 2011

We can never forget the deep sadness that engulfed all of Iwate Prefecture on this day, nor the sense of uncertainty that there was no light at the end of the tunnel. However, I believe it is our great mission to keep steadily moving forward, even if slowly, and to transform our tears, sorrow, and grief into new possibilities and a shining light for the future.

The Great East Japan Earthquake and Tsunami left us with many lessons to learn. It has served as a reminder of the importance of our ability to persevere, think, and act on our own when confronted with difficulties, as well as the value of interpersonal relationships (bonds). We need to share and make use of these lessons throughout Iwate Prefecture.

We must always remember the earthquake and tsunami and make these lessons the foundation of the education system in Iwate Prefecture. We will come together as a united prefecture under the Iwate Reconstruction Education Program to nurture people who cherish their region and support its reconstruction and development.

February 2013 Iwate Prefectural Board of Education Superintendent of Education Hiroki Kanno

Iwate Reconstruction Education

Eight years have passed since the Great East Japan Earthquake and Tsunami.

With it still fresh in our minds, we have been promoting the Iwate Reconstruction Education Program, a prefecture-specific educational program, in an effort to nurture people who cherish their region and support its reconstruction and development.

In the midst of a variety of hardships following the disaster, children in our prefecture are being raised by the community, learning its good aspects and experiencing the warmth of people, and are progressively maturing into people who will support the future of Iwate.

While the educational environment is changing dramatically, children are progressing ambitiously, pursuing their goals and aspirations for the future. They truly represent the future, hope, and treasure of Iwate Prefecture.

Iwate's prefectural education must encourage each and every one of them to make their dreams come true people who settle down and give back to the community or spread their wings to the wider world. In order to inspire each and every youngster with limitless potential to walk forward with a twinkle in their eyes, fulfilling their dreams and aspirations while cherishing their ties and bonds with Iwate Prefecture, we will continue to promote the Iwate Reconstruction Education Program.

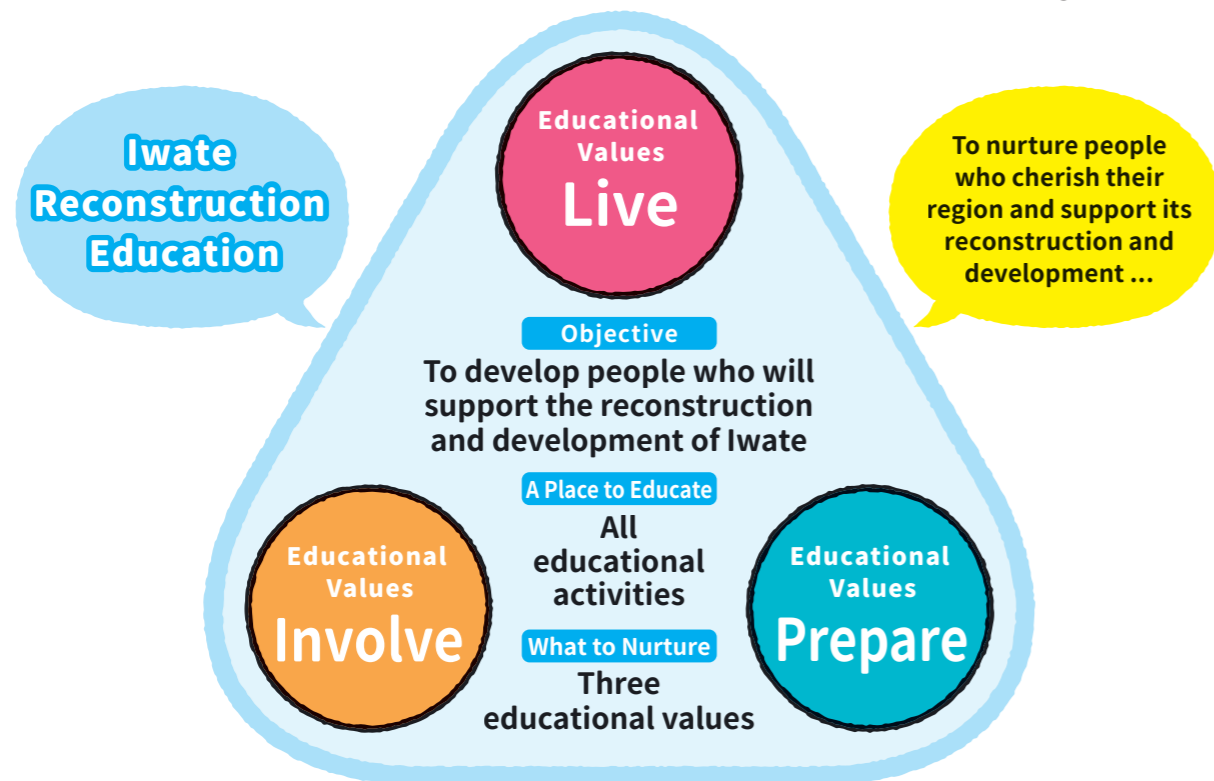
March 2019 Iwate Prefectural Board of Education Superintendent of Education Yoshiyuki Takahashi

What Is Iwate Reconstruction Education ?

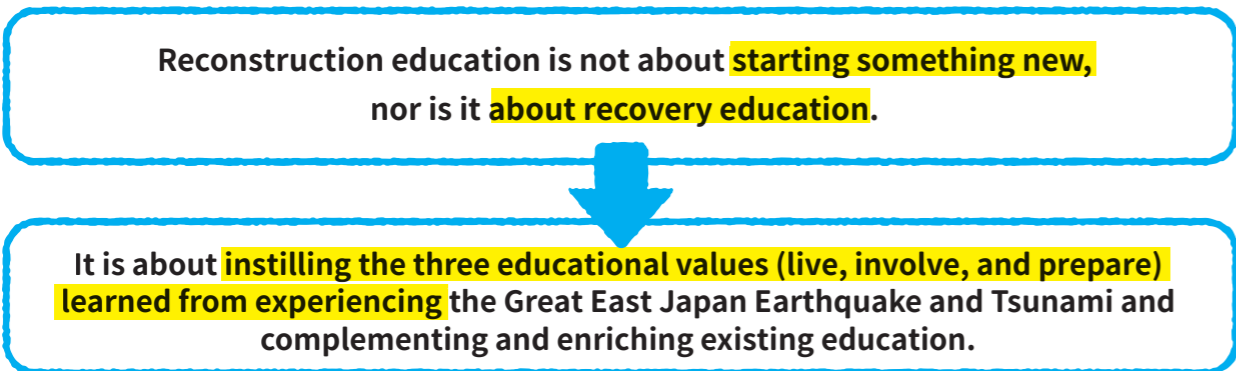
What Is the Iwate Reconstruction Education Program?

It is designed to instill in children three educational values (**live**, **involve**, and **prepare**) through educational activities at each school in order to nurture them to cherish their region and support its reconstruction and development.

The Iwate Reconstruction Education Program, rooted in the foundation of education in Iwate Prefecture, aims to support children to learn how to thrive in life and shape their future by incorporating lessons learned from the Great East Japan Earthquake and Tsunami into school education. In order to foster each child's zest for life, Iwate Prefecture promotes school education based on the Iwate Reconstruction Education Program.



Points to note about the philosophy of the Iwate Reconstruction Education Program



Significance of the Iwate Reconstruction Education Program

Each child has **hopes, potential and a future.**

Significance of the Iwate Reconstruction Education Program

It is important that all schools in the prefecture work together to help children pass on the lessons of the Great East Japan Earthquake and Tsunami to future generations, think about their way of life and how they want to be, pursue their future dreams, and create a better society.



Put Into Practice the Lessons Learned from the Great East Japan Earthquake and Tsunami

The earthquake and tsunami taught us many lessons, including the importance of life, our existence, mental and physical health, connections with people and communities, coexistence with nature, participation in society, disaster preparedness and safety, and more.

These experiences and lessons must be reflected in educational activities and passed on to future generations. The Iwate Reconstruction Education Program, rooted in the foundation of our prefecture's education, is a program that can only be carried out by Iwate Prefecture and, as such, must be implemented.



Develop the Ability to Survive at Any Time and in Any Situation

As we live in a society that coexists with nature, we do not know when, where, or under what circumstances we may encounter a disaster. We must protect our own lives at any time under any circumstances.

Therefore, each child needs to develop the ability to collect information on their own and make decisions by themselves.



Outcomes of the Iwate Reconstruction Education Program

Education for children has been expanding beyond the classroom and into the **community as a whole**. The **base for a new community** is being built as a result of **numerous adults working together** to promote children's learning.



By incorporating the lessons of the earthquake and tsunami into curriculum, students can receive an education that aligns with local circumstances. Additionally, promoting their own reconstruction education program can improve the creativity and cooperation of teachers. Furthermore, it can strengthen cooperation between schools of the same type as well as between schools of different types (daycare, preschools, elementary schools, junior high schools, high schools, and special-needs schools.)



Outcomes

Establishment of the Iwate Reconstruction Education Program

- Program has been incorporated into school curriculum
- Annual plan has been made

Expansion of the Iwate Reconstruction Education Program

- Guidance in school courses
- Health education
- Disaster prevention education
- Community education
- Moral education
- etc. ...

Transformation of Schools Engaged the Iwate Reconstruction Education Program

- Focus on children's independence
- Focus on cooperation with families and communities
- Curriculum management from a cross-curricular perspective
- Interactive learning

Change in Teachers Who Engaged the Iwate Reconstruction Education Program

- Able to support children from different perspectives
- More opportunities for teachers to utilize their creativity and ingenuity
- More opportunities to collaborate within their own school, with other schools, and between different types of schools

Outcomes

Change in Children Who Engaged in the Iwate Reconstruction Education Program

- Became able to think seriously about the importance of life
- Became able to manage their mental health
- Became able to cooperate with friends and community members
- Became able to further understand local history, culture, and nature
- Improved understanding and awareness of disasters and disaster preparedness
- Engaged in volunteer activities willingly



From the earthquake and tsunami, children can learn and embody lessons about the importance of life, connecting with people and communities, and ensuring safety through educational activities, which will help them overcome the challenges they face in life.

Outcomes

Strengthening of Coordination Between Families and Communities Through the Iwate Reconstruction Education Program

- Increased efforts to recognize the good aspects of the region through town tours, etc.
- More activities in which families and community members can participate
- More opportunities to participate in local disaster drills



Collaboration with schools can be promoted to increase awareness and skills to protect lives. Children's participation and contribution to local activities can lead to community building with schools at the core.

Outcomes

Strengthening of Coordination Between Related Institutions and Organizations Through the Iwate Reconstruction Education Program

- Increased utilization of the Morioka Local Meteorological Observatory, Iwate River and National Highway Office, and others
- Increased collaboration with Iwate University, Iwate Prefectural University, and others
- Increased opportunities to collaborate with the relevant departments of local governments
- Increased opportunities to cooperate and collaborate with industry



Collaboration with related institutions and organizations enables us to implement a variety of activities and support children's growth.

The outcomes of Iwate Reconstruction Education Program...

Demonstrates that **Curriculum Management** and **Community-Inclusive Education** were implemented in Iwate before other prefectures.

Points for Promoting the Iwate Reconstruction Education Program

Promotion of the Iwate Reconstruction Education Program

The Iwate Reconstruction Education Program aims to nurture people who cherish their region and support its reconstruction and development by embodying three educational values (live, involve, and prepare) learned from the lessons of the earthquake and tsunami in order to address contemporary educational issues and to supplement and enrich existing educational activities.



Objective Before the Great East Japan Earthquake and Tsunami

To build balanced personalities through intellectual, moral, and physical education (people development)

Philosophy

It is important to nurture people who will carry the future of Iwate Prefecture in order to persevere no matter what era or environment they fall into and to change Iwate Prefecture and society as a whole for the better.

Complement and Enrichment

Objective of the Iwate Reconstruction Education Program

To nurture people who cherish their region and support its reconstruction and development (To develop people who support the reconstruction and development)

Philosophy

The education mission of Iwate Prefecture is to nurture children who will support Iwate's reconstruction and development for the next 10 to 20 years in order to overcome the **tragedy of the earthquake and tsunami**, pass on the experience of it, and create a better future.

Points to Promote

- Enhance activities to nurture children's pride in and attachment to their birthplace
- Review and enhance the content of the curriculum
- Collaborate with families, communities, schools, and related institutions and organizations
- Enrich activities that are connected to children's daily lives

Educational Values of the Iwate Reconstruction Education Program

The educational values (**live**, **involve**, and **prepare**) learned from the experience of the earthquake and tsunami were reevaluated.

1 Live

- Matters related to the importance of life, nature and reverence
- Matters concerning one's mental state and way of living in the future
- Matters related to mental support
- Matters related to physical health, including the maintenance and promotion of physical fitness



2 Involve

- Matters related to family ties and the joy of being part of a family
- Matters related to helping and taking care of friends and community members
- Matters related to the ties (bonds) within and outside of the prefecture and with other countries in post-disaster relief activities
- Matters related to community building
- Matters related to our connection with nature



3 Prepare

- Matters related to disaster preparedness based on the experience of the earthquake and tsunami (e.g., disruption of information and lifelines), scientific knowledge, and disaster preparedness literacy
- Matters related to decisions made during a disaster
- Matters related to daily preparedness in anticipation of disasters
- Matters related to the ability to survive in times of emergency and the skills to secure food, clothing, and shelter
- Learning about disasters



List of Educational Values and 21 Example Aims of the Program

To promote the Iwate Reconstruction Education Program, **three educational values** and **21 example sub-values** have been revised. The Iwate Reconstruction Education Program will be implemented based on these values.

The following is a list of the three educational values and 21 example items that are necessary for children to pass on the lessons of the earthquake and tsunami to future generations, to think about their way of life and how they want to be, to pursue their future dreams, and to create a better society. Schools may add their own items based on their community's actual circumstances and other factors.



- Examples (Items)**
- Pass on the lessons to future generations.
- How to live as a human being.
- Have a grateful attitude.
- Cherishing their region
- etc. ...

Live

- ① Irreplaceable Lives**
Realize and cherish the fact that all life is irreplaceable.
- ② Coexistence with Nature**
Think about living with nature by inspiring a sense of appreciation and reverence for its bounty and beauty.
- ③ Importance of Self Value**
Value their own existence and be aware that they are needed in all circumstances.
- ④ The Importance of Hopes and Dreams, and the Strength to Pursue Them**
Having hopes and dreams means finding value in life; therefore, developing a strong will and attitude to life in any situation.
- ⑤ Self-Growth**
Be aware that many people have helped them throughout their lives so that they grow up with a sense of gratitude.
- ⑥ Mental Health**
Learn how to cope with stress from their environments, as well as sadness and hardship in order to maintain their mental health.
- ⑦ Physical Health**
Be conscious of their surroundings so they can play and exercise safely.

Involve

- ⑧ Family Ties**
Value family ties that serve as the foundation of their lives to live in peace and security. Play their parts as members of a family.
- ⑨ Connection with Friends**
Make friends who support each other and develop an attitude towards cherishing friendships.
- ⑩ Connection with the Community**
Learn about the thoughts and feelings of the various people they live with in their communities, including young children, the elderly, and the disabled, and help them develop a sense of attachment to the community.
- ⑪ Volunteer and Relief Activities**
Become able to empathize with the joys of others by willingly taking part in initiatives to help others and the community.
- ⑫ Self and Community**
Develop a sense of hope for and get involved in building a safe community and a society where they can connect with beautiful nature, traditional events, local performing arts, and warm-hearted people.
- ⑬ Progress of Restoration and Reconstruction**
Study the state of restoration and reconstruction in houses, infrastructure and towns damaged by natural disasters such as earthquakes and tsunamis, and get involved in creating safe and lively communities.
- ⑭ Community Development for Disaster Preparedness**
Get involved in community building and community development to prepare for disasters that may occur in the future.

Prepare

- ⑮ Damage from Natural Disasters**
Understand natural disasters, such as earthquakes and tsunamis, and the damage they cause.
- ⑯ Mechanisms of Natural Disasters**
Understand the mechanisms by which natural disasters, such as earthquakes and tsunamis, occur and the damage each can cause.
- ⑰ History of Natural Disasters**
Study natural disasters that have occurred in the past and the efforts and ingenuity of people who have lived with natural disasters to understand disaster preparedness and mitigation to pass this knowledge onto the next generation.
- ⑱ Impact of Disasters on Lifelines and Local Economies**
Learn and understand the importance of supply and transportation systems such as water, electricity, gas, kerosene, gasoline, and roads and be prepared to cope with the loss of these resources in the event of a natural disaster.
- ⑲ Gathering, Utilizing, and Communicating Information in Times of Disaster**
Understand the importance of information and how to collect, select, judge, disseminate, and utilize information from previous natural disasters such as earthquakes and tsunamis.
- ⑳ Daily Preparedness**
Learn the location of evacuation centers, evacuation procedures, and safe evacuation routes. Take disaster preparedness measures both at school and at home, such as securing furniture, confirming evacuation procedures, setting up a meeting place, preparing items to take in case of disaster, and having a proper understanding of radiation. Understand the local disaster prevention system and participate in disaster preparedness activities.
- ㉑ Skills to Protect Oneself and Survive**
Acquire the skills to anticipate (avoid) danger, protect themselves and others in the face of a disaster or accident, minimize damage, and survive in an emergency.

How to Incorporate the Iwate Reconstruction Education Program into School Management and How to Develop a Curriculum

The following is the concept behind incorporating the Iwate Reconstruction Education Program into the school's basic policy and management priorities.

Based on goal-oriented school management, the objective of the Iwate Reconstruction Education Program (nurturing people who cherish their region and support its reconstruction and development) will be touched upon in a basic school management policy. Schools will incorporate their own reconstruction education programs into their management priorities by referring to the [List of Educational Values](#), and build a system to implement the programs.



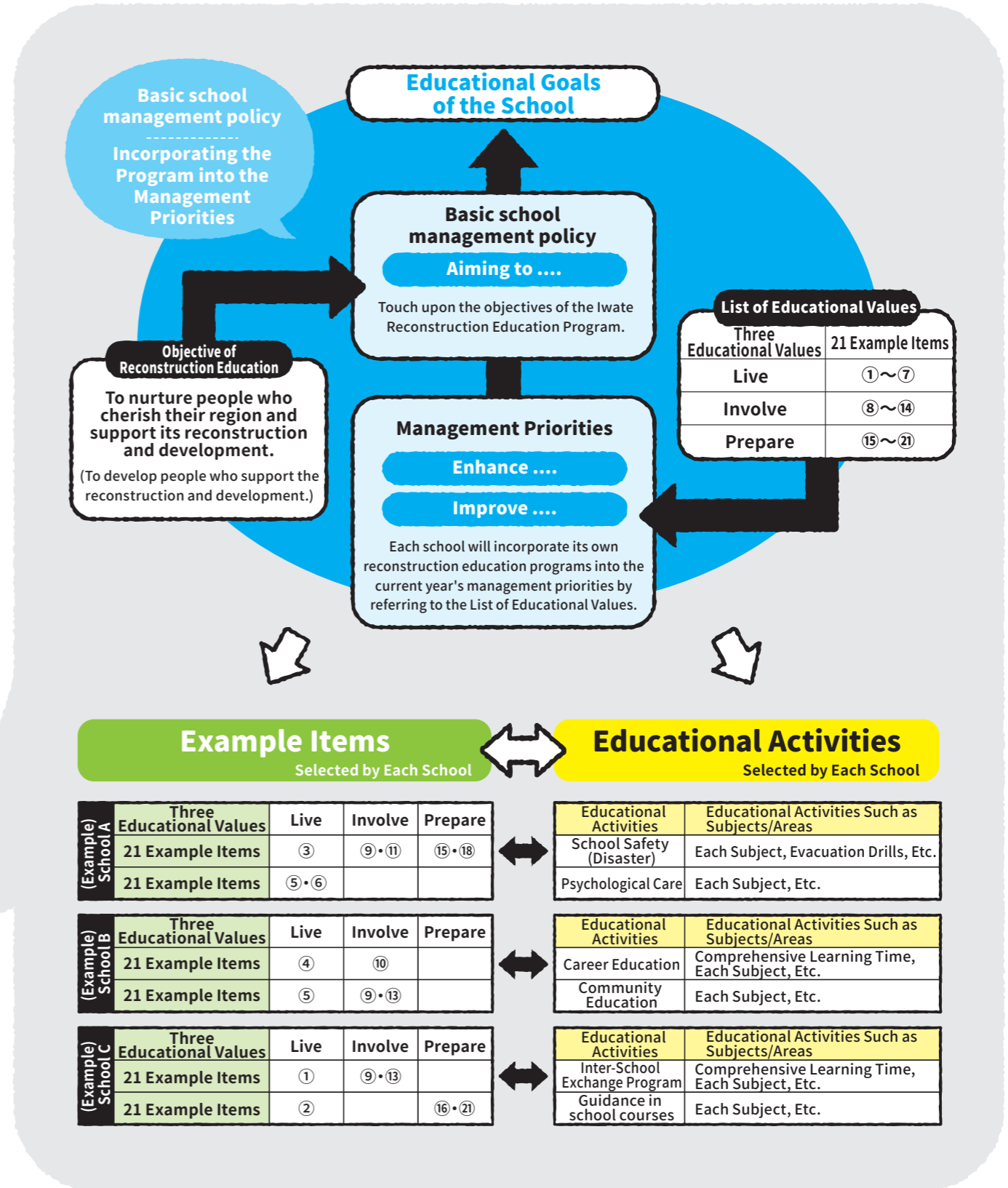
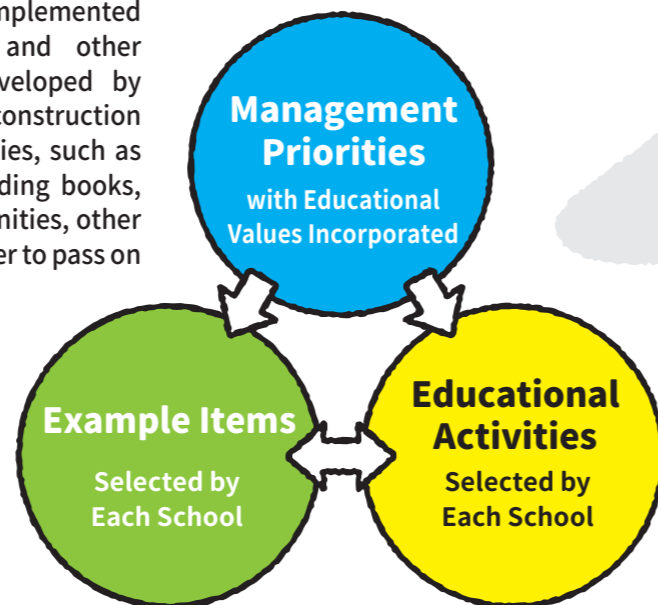
The three educational values (live, involve, and prepare) of the Iwate Reconstruction Education Program will be developed through all school educational activities as they apply to all subject areas.

Each school will incorporate the educational values that it has judged to be significant into its management priorities. Each school will then link the example aims to some educational activities and implement the Iwate Reconstruction Education Program together with other schools, families, communities, and related institutions and organizations.

Each school will execute a PDCA management cycle to evaluate and improve its reconstruction education programs in light of its predefined priorities.

Basic Curriculum Development Method

The Iwate Reconstruction Education Program will be implemented using the allocated hours for each subject/area and other extracurricular activities. The curriculum will be developed by comparing the List of Educational Values of the Iwate Reconstruction Education Program with the school's educational activities, such as subjects/areas of study, by utilizing supplementary reading books, archives, etc., and by collaborating with families, communities, other schools, and related institutions and organizations, in order to pass on the lessons of the disaster to future generations.



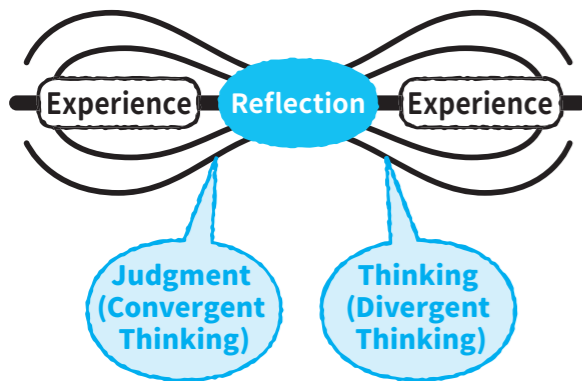
Important Points of the Iwate Reconstruction Education Program

Important Points

Learning through interactions with people, things, and matters.

Learning to confront new issues will develop children's abilities to think, judge, and express themselves. It will enable them to cope with any situation they may encounter in their daily lives.

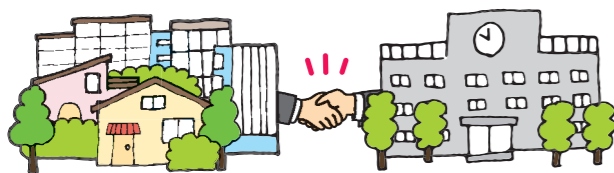
The Ability to Express, etc.



Educational Content in Accordance with the Actual Circumstances of the School

The curriculum will include initiatives to collaborate with schools, families, communities, and related institutions to nurture children's pride in and attachment to their birthplace. The curriculum will be based on the circumstances, environments and needs of the schools and communities, as well as the physical and mental conditions of the children.

Cooperation and Collaboration



Community

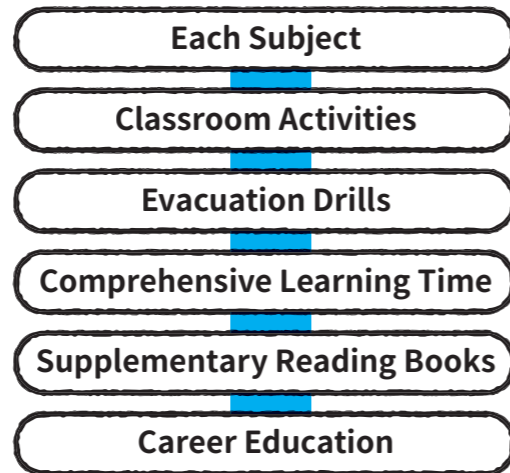
- Revitalize the community!
- Strengthen connections among local residents!

School

- Rediscover the good aspects of the community!
- Enhance hands-on activities!
- Improve the quality of education!

Systematic and Organic Guidance

The program will be implemented systematically as part of each school's educational activities and will be taught naturally with a cross-curricular educational perspective to achieve the objectives of the program.



By connecting the learning content, activities, etc., we will nurture the abilities and attitudes that we aim for in our reconstruction education!



Teaching Plan of the Iwate Reconstruction Education Program

Teaching Plan

The progression of the Iwate Reconstruction Education Program will be carried out in a systematic and formulated manner.

The implementation of educational activities will be determined based on the following guiding concepts: when to implement (curriculum unit), the estimated time required to perform activities, the content of the educational activities, the degree of improvement in children's learning expected through the activities, and the actual outcomes of the activities.



Implementation of Educational Activities

Each school will fully consider what kind of ability to develop, for what purpose, and what educational activities are best for that purpose and then form a common understanding from those considerations.

When to Implement (Curriculum Unit)

(Example) Based on the past social studies field trip

How

(Example) Utilize programs (Sanriku Railway's tours to visit disaster affected-areas, etc.)

Expected Outcomes

(Example) Children's pride in and attachment to their birthplace is expected to increase.

Provide learning opportunities that naturally peak children's interests and make them want to learn more.



The Importance of Connecting with Communities

Nurture Children with Pride in, Attachment to, and a Deeper Understanding of Their Communities - Communities and Schools Become Partners -

The environment in which children grow up, as well as the challenges that schools face, are becoming increasingly complex. In order for children who will lead the next generation to grow up in a healthy manner, it is critical for schools and the community (a wide range of community members including the elderly, adults, students, parents, PTA, NPOs, private companies, organizations, institutions, and so on) to collaborate as partners in order to continuously improve the quality of education throughout the entire community.

Therefore, Iwate Prefecture will promote school development (community-based school development) by engaging with the local community, further sharing educational goals, and actively reflecting the opinions of local residents, guardians, and other school management stakeholders. Specifically, we will collaborate with the local community to enrich the educational activities of children through various community-school cooperation initiatives.

Furthermore, participation in school educational activities by local residents and guardians in various ways is expected to contribute to their sense of self-esteem and motivation in life, as well as community building.



- Strengthen connections among local residents!
- Revitalize the community!

Iwate Reconstruction Education

- Improve the quality of education!
- Enhance hands-on activities!
- Rediscover the good aspects of the community!



Testimonials of the Iwate Reconstruction Education Program

Here is a look back at the Iwate Reconstruction Education Program, along with some testimonials of participants.

Give me a few more years! Then I'll be ready to let the children experience aquaculture again.

Words from a fisherman who has been a great support to schools

Let's not just be supporters and recipients, but let's become friends who will work together to improve the future.

Words from a student at an inter-school exchange program

I will do my best to nurture the lives saved by our teachers.

Words from a mother at the graduation ceremony

When the town recovers, I want to come back here to have fun like before, not just to provide support.

Words from a sixth-year elementary school student after the school exchange

I want to cooperate with local people to build the town. I want to do my best now.

Words from a second-year junior high school student at the time of the earthquake and tsunami

Reconstruction will take a long time. I want to make a town where people will never forget the disaster.

Words from a first-year junior high school student at the time of the earthquake and tsunami

I want this town to be a place where everyone, from children to the elderly, can interact on friendly terms with each other.

Words from a third-year elementary school student at the time of the earthquake and tsunami

I want to brighten up and bring smiles to the faces of the local people by joining in community events and showing them that we are doing our best.

Words from a third-year elementary school student after the earthquake and tsunami

I will never forget that day. I will never give up on the future. Please watch over us.

Words from the Representative of Iwate Prefecture at the Memorial Ceremony

We want the children to know the community's good aspects, feel the people's warmth, and develop a sense of being raised by the community.

Words from a homeroom teacher at a school workshop

There are two professions I want to have in the future. One is to be a doctor working in a hospital. The other is to be a school teacher. I would like to become a school teacher and tell children about the earthquake and tsunami.

Words from a child during an inter-school exchange program

I would like to contribute to the local community to help restore the natural beauty of the village, which was once blessed with the sea and greenery.

Words from a sixth-year elementary school student at the time of the earthquake and tsunami

I would like to do my best to promote reconstruction, with young people, including myself, playing a central role.

Words from an older student at the time of the earthquake and tsunami

Through the various activities under the Iwate Reconstruction Education Program, we have been given the opportunity to learn about the value of life and the beauty of our community, and to think about how we should live.

Words from a second-year high school student after the presentation of the student's activities

Possibilities of the Iwate Reconstruction Education Program

Iwate Reconstruction Education Program

Possibilities of the Iwate Reconstruction Education Program

The **OECD Key Competencies** and the **United Nations Education for Sustainable Development (ESD)** are based on the broader concept of **capabilities**. This concept is linked to the educational values (**live, involve, and prepare**) of the Iwate Reconstruction Education program.

The **key competencies** are divided into three categories: ability to use social, cultural, and technological tools interactively (interrelationships between the individual and society), ability to form relationships in diverse social groups (interrelationships with self and others), and ability to act autonomously (individual autonomy and independence).

At the time of the earthquake and tsunami, people were observed trying to survive in schools and communities by proactively interacting with various people and making the best use of limited resources.

The manner in which people interacted with others revealed their ability to form relationships in diverse social groups, the manner in which they acted proactively revealed their ability to act autonomously, and the manner in which they made the best use of limited resources revealed their ability to use social, cultural, and technological tools interactively.

ESD is education designed to foster the future builders of a sustainable society. It conveys the need to interconnect various related fields from the perspective of 'building a sustainable society' and working comprehensively.

The Iwate Reconstruction Education Program's goal is to nurture people who cherish their region and support its reconstruction and development, which is similar to the ESD education goal of providing education that fosters the future builders of a sustainable society. ESD also has many other features that are connected to the initiatives of the Iwate Reconstruction Education Program, such as a comprehensive approach and an emphasis on experience, hands-on learning, exploration, and practice.

It can be said that the education required worldwide is the concept of the Iwate Reconstruction Education program, which is based on the three educational values (live, involve, and prepare) we have learned from the lessons of the Great East Japan Earthquake and Tsunami.

In addition, the program is expected to provide the following benefits:

- The Iwate Reconstruction Education program is **effective in nurturing difficult-to-quantify skills such as cooperation and communication with others**, and it is linked to developing a zest for life and the ability to survive. It is also expected to result in more in-depth learning in each subject.
- Through the Iwate Reconstruction Education program, **schools in Iwate Prefecture can be made more accessible to the general public**, leading to the formation of communities centered on schools and schools in harmony with the community.



Reference Materials on Iwate Reconstruction Education

◆The Iwate Reconstruction Education Program	February 2012	Iwate Prefectural Board of Education
◆The Iwate Reconstruction Education Program (Revised Version)	February 2013	Iwate Prefectural Board of Education
◆Iwate Reconstruction Education Practical Case Studies	March 2013	Iwate Prefectural Board of Education
◆Iwate Reconstruction Education Resource Materials	March 2013	Iwate Prefectural Board of Education
◆Records of the Great East Japan Earthquake		
Believe in the Future and Start the Journey Now	February 2012	Iwate Prefectural Elementary School Principals Association
Looking Ahead Toward Tomorrow	March 2012	Iwate Prefectural Junior High School Principals Association
Prayer: Records and Memoirs of the Great East Japan Earthquake	January 2013	Iwate Prefectural High School Principals Association
~Affected High Schools and Special Needs Schools on the Coast of Iwate Prefecture~		Iwate Prefectural High School Assistant Principals and Vice-Principals Meeting
◆Reconstructing Education from the Perspective of Reconstruction Education –The Challenge of Iwate Reconstruction Education–		Toshiyuki Omomo, Junichi Murakami Kie Umezawa, Satoshi Shibata Seiya Miyaguchi
◆Iwate Earthquake and Tsunami Archive - Hope -		Iwate Prefectural Bureau of Reconstruction
◆Revised Courses of Study for FY 2017 and 2018		Ministry of Education, Culture, Sports, Science and Technology
◆OECD Key Competencies		Ministry of Education, Culture, Sports, Science and Technology
◆ESD: Education for Sustainable Development		Ministry of Education, Culture, Sports, Science and Technology

Related Web Sites



Iwate Reconstruction Education Program (Third Edition)

<https://www.pref.iwate.jp/kyouikubunka/kyouiku/gakkyou/fukkou/index.html>



Iwate Earthquake and Tsunami Archive - Hope -

<https://iwate-archive.pref.iwate.jp/>

Iwate Reconstruction Education Program (Third Edition)

Issued March 2019

Copyright holder	Iwate Prefectural Board of Education
Publisher	Industry and Reconstruction Education, School Affairs Section, Iwate Prefectural Board of Education
Address	10-1, Uchimaru, Morioka-shi, Iwate-ken, 020-8570
Printed by	Kawaguchi Printing Co., Ltd.