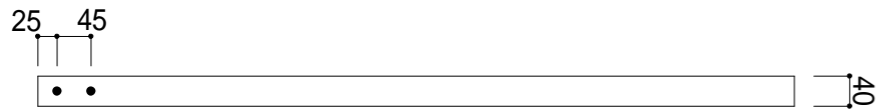


A-1

40*38*1000

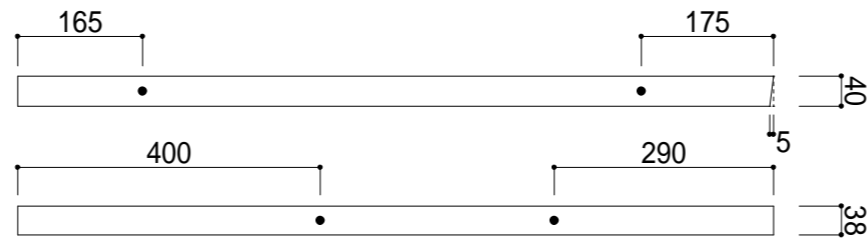
4本



A-2

40*38*1000

4本



B

40*38*750

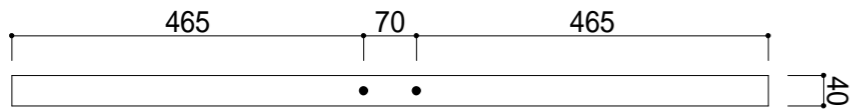
2本



C

40*38*1000

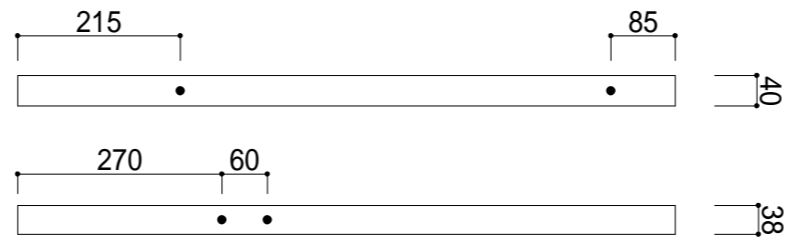
2本



D

40*38*870

2本



E

40*38*1000

2本



F-1

300*800*21

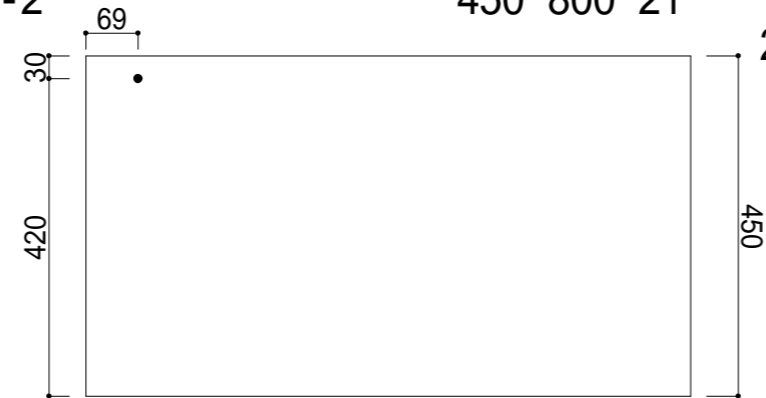
2枚



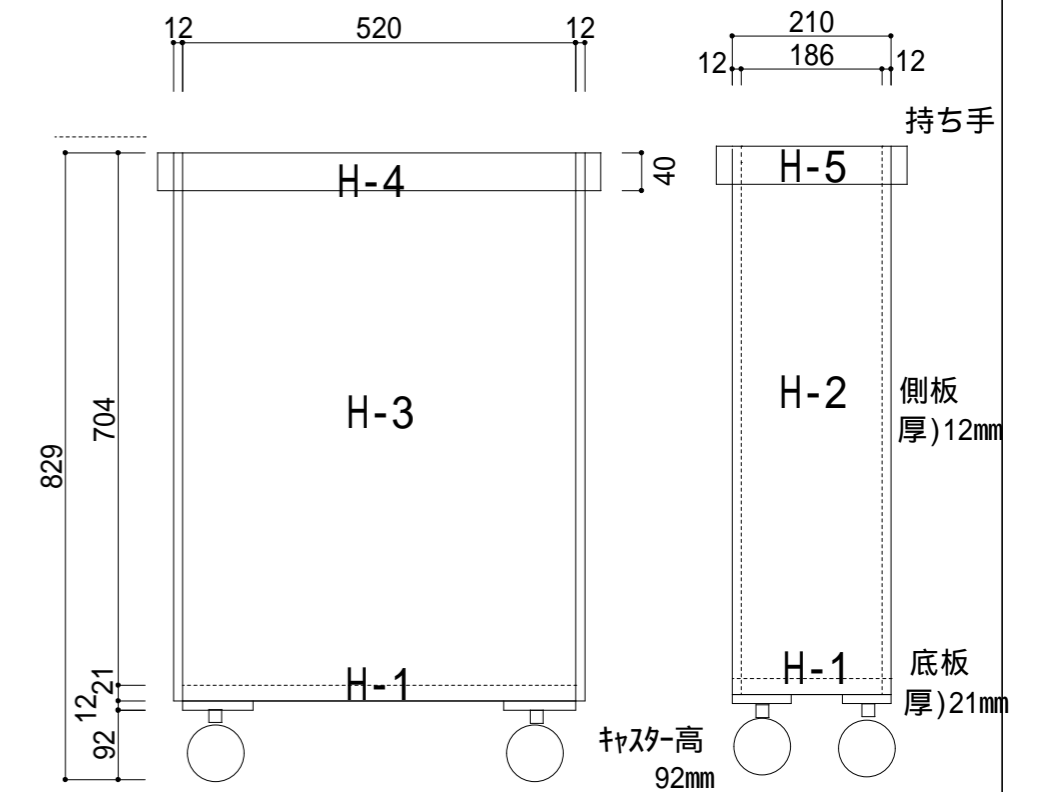
F-2

450*800*21

2枚



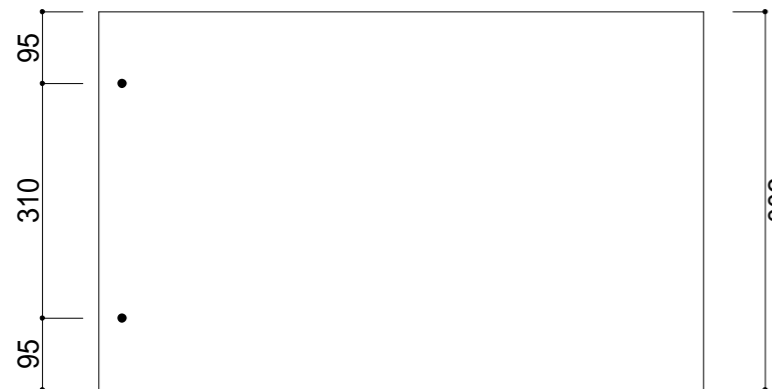
注) 21mm天板をのせて、天板の上端が850mmになるように高さを設定すること



G

500*800*12

2枚



いわてヤタイ