

# News from Iwate's Reconstruction

The news from Iwate as it moves toward reconstruction

We are deeply grateful for the heartwarming encouragement and support received from both within and outside of Japan in the aftermath of the Great East Japan Earthquake and Tsunami, which struck on March 11, 2011. The precious bonds created during this time will always be cherished.

As the New Year is upon us, Iwate is looking toward a quicker reconstruction more than ever with the help from everyone within and outside of Japan.

We will now bring you the news from Iwate's reconstruction.

Ganbaro, Iwate!  
Let's stick together, Iwate!

三陸復興

Volume 78

January 1, 2015

## Publication of Results of the Fourth "Iwate Reconstruction Watchers Survey" for 2014

Iwate Prefecture conducts the "Iwate Reconstruction Watchers Survey" in order to periodically measure Iwate's reconstruction progress following the Great East Japan Earthquake and Tsunami.

The survey targets people living or working in the disaster-affected municipalities, and is conducted once every three months.

We will now explain some key points extracted from the results of the fourth survey this year (conducted in November 2014).

How do you feel about the recovery of the local economy?  
Fully recovered" or "Mostly recovered": 52.0% (last time: 51.9%)

- The results are almost the same as last time.
- While some participants appreciated housing construction and the liveliness around mega stores and public facilities, there were also those who were worried over labor shortage and what will happen after the reconstruction demand is over.

How have the lives of the survivors recovered?  
"Fully recovered" or "Mostly recovered": 52.3% (last time: 55.3%)

- There was a decrease of 3 points from last time.
- While some participants expressed positively that construction work on higher grounds has progressed, there were also those who were mentally exhausted from prolongation of life in the emergency temporary housing and anxiety about finances on rebuilding their homes.

How do you feel about the disaster mitigation measures?  
"Satisfactory" or "Mostly satisfactory": 28.8% (last time: 25.4%)

- There was an increase of 3.4 points from the previous results.
- While some participants positively evaluated the progress on the construction on the seawalls, there were also those who were worried over things like the reduction of disaster prevention awareness.

For more information:

2014 4th Iwate Reconstruction Watchers Survey

Search

## Japan Tohoku Six Prefecture Thanksgiving Festival in Taipei

In the four days between Dec. 19 (Fri) to the 22nd (Mon), the Japan Tohoku Six Prefecture Thanksgiving Festival was held at the Flora Expo Dome in Taipei, Taiwan.

While this was held to thank Taiwan for its support to the damaged areas during the Great East Japan Earthquake and Tsunami, at the same time it was held to send out information about Tohoku's appealing tourist points, and to aim to promote exchange in tourism and industry.

Iwate set up a promotion booth and showed off Iwate's charm through its seasons.

On the main stage that was set up in the exhibition hall, along with demonstrations of Sansa-odori and performances

from Otsuchi singer, Misaki Usuzawa, guests could also try their hand at Wanko soba.

Misaki Usuzawa expressed her thanks on stage by saying, "After receiving so much support from the people of Taiwan, the coastal regions have gotten back their energy little by little. We would like to thank the Taiwanese people from the bottom of our hearts. Please come to Iwate and see our prefecture as it works its way toward reconstruction."

This event was not just an event to promote the prefecture, but was also a four-day event that deepened the bonds between Iwate and Taiwan even more than before.



The Japan Tohoku Six Prefecture Thanksgiving Festival



Taiwanese participants in a Wanko soba competition



Iwate's promotion booth

~To A New Homeland~  
Iwate Sanriku Reconstruction Forum

Date

2015 1/15(Thu) 16(Fri) 13:30-16:55

Place

Iwate Prefectural Information Center Aiina Hall  
Within Morioka, Ofunato Goudou Chousha

While preserving the memories from the Great East Earthquake and Tsunami and taking an interest in the conditions of the disaster sites, we will increase our pace and continue toward a reconstruction that will come even a day sooner by connecting with a wide-range of involvement.

For more information, please visit the Iwate Prefecture website.

<http://www.pref.iwate.jp/event/fukkou/031401.html>



For any further inquiries: Bureau of Reconstruction, Reconstruction Promotion Division ☎ 019-629-6925

## High school Students Send *Kadomatsu* For A Bright New Year's

Miyako  
Otsuchi

Wanting to lift the spirits of the people in the damaged areas, students from Iwate Prefectural Hanamaki Agricultural High School sent *kadomatsu* that they had made in class to Miyako and Otsuchi.

The *kadomatsu*, which are traditional New Year's pine decorations, were made by the Environmental Science Department Greenery Division second year students, and on December 15 (Mon), six of the students and their teacher visited Miyako City Hall and skillfully decorated the front door.

"We made the *kadomatsu* hoping that the people of Miyako would be able to greet a bright New Year. We hope that everyone will see this *kadomatsu* and get a little bit of energy from seeing it," said the school's student representative.

In response, Masanori Yamamoto, mayor of Miyako, said, "The atmosphere has brightened up, and I've become more energized from looking at it. Next year we'll continue towards even more reconstruction."



The Iwate Prefectural Hanamaki Agricultural High School students, their teacher, and Mayor Masanori Yamamoto (center) (photo courtesy of Miyako City)

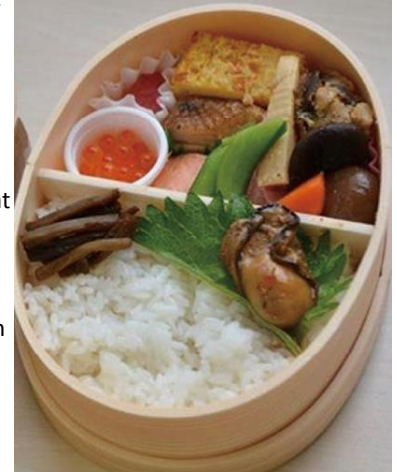
Wrapped with the dreams of Rikuzentakata, Takata no Yume Eki-ben, On Sale Now!

Rikuzentakata

On Dec. 11 (Thu), Takata no Yume, an eki-ben (station bento) that uses the new Takata no Yume rice, which contains the wishes and dreams of Rikuzentakata, is now on sale.

Saito Shogetsudo, K.K. (Ichinoseki) made the eki-ben after receiving a commission from Rikuzentakata City.

Using Rikuzentakata's locally produced Takata no Yume rice as a base along with teriyaki oysters, soy sauce marinated salmon roe, salted and grilled silver salmon, simmered scallops, and so on, you can enjoy Sanriku's seafood in this bento. They are sold in Morioka station, Ichinoseki station, and Tokyo station at 1,200 yen including tax. It's expected that as a PR product for Rikuzentakata, the Takata no Yume eki-ben will jump-start the local agricultural and fishery industries.



Takata no Yume eki-ben (photo courtesy of Rikuzentakata City)

Many young people are diligently helping the affected area of Sanriku move toward a full reconstruction. The section "People for Sanriku's Future" introduces these young people and their powerful feelings.

Part 32 introduces Ms. Mikiko Takeno's efforts.

### PROFILE

Originally from Ofunato, Ofunato.

After graduating high school, she worked as a pâtissier in Tokyo, and made a U-turn back to Ofunato in February, 2011.

The Great East Earthquake and Tsunami hit the following month. Currently, she works as a store manager at Takeno Stationery Shop in Ofunato, while also starting up Bonzu Project, which broadcasts information about Ofunato.

*I can really see the extent of the impact of what I'm doing*

"If I could send out information about my hometown of Ofunato..." And with those thoughts, Ms. Takeno started up Bonzu Project in May 2012, and is developing and selling reconstruction supporting products.

Among her products, paper products like postcards were made by thinly slicing the debris of the damaged pines of a forest that were cut down in Okirai, Sanriku. A part of the sales goes



Takeno Stationery Shop  
Store Manager

Mikiko Takeno



"What we can do to help ♪  
Bonzu Project & Ofunaton  
in Ofunato"

to Ofunato's reconstruction work.

"It doesn't end with just the person that buys the postcard. The person that buys it then sends it to a third party, and another connection appears. Then the purchaser gets a phone call from the third party who received that postcard, and it's just a very happy exchange of supporting messages," she says on seeing the extent of the impact of her work.

*Continuous support through products*

"I think it isn't surprising that the further away you are from the disaster sites, the more words like 'disaster site' and 'reconstruction' mean less to you. But I think that if you think of the earthquake even just once in a year, that even a small part of your mind is thinking of it is connecting to the reconstruction," she says on her thoughts on supporting the reconstruction.

While at the same time working on Bonzu Project, Ms. Takeno is also working on commercializing the Ofunato City mascot Ofunato.

There are a lot of PR products for Ofunato, and I hope everyone will have one of their own," she says with hopes for continuous support from here on.

## Casualties & Damage in Iwate As of Nov. 30, 2014

- ▶ Human casualties/deaths: 4,672; Missing: 1,130
- ▶ Buildings destroyed (residences only, total/partial): 25,716

To make a donation to aid in Iwate's reconstruction:  
[www.pref.iwate.jp/fukkounougoki/dayori/news/011100.html](http://www.pref.iwate.jp/fukkounougoki/dayori/news/011100.html)

## Thank you for all your support!

As of Nov. 30, 2014

**Donations for survivors:** Around ¥18.19584 billion (90,312 donations)

**Donations for reconstruction projects:** Around ¥19.6944 billion (7,086 donations)

**Iwate Learning Hope Fund donations:** Around ¥7.06619 billion (14,290 donations)

※ This fund is to assist in the study and daily life of affected children by encouraging sport and study activities.

News from Iwate's Reconstruction, Volume 78. January 1, 2015.

Published by the General Affairs Division, Bureau of Reconstruction, Iwate Prefecture. TEL: 019-629-6925  
For the News from Iwate's Reconstruction archives: <http://www.pref.iwate.jp/fukkounougoki/dayori/news/>

Editing & Printing: SYNAPSE